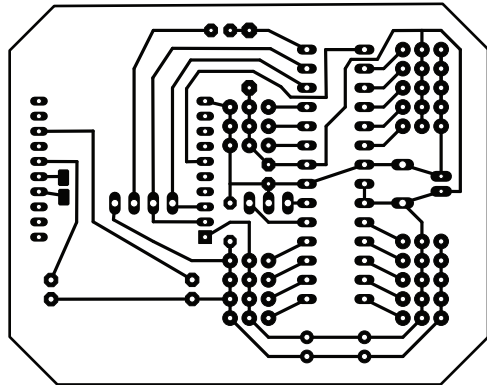


Toner Transfer Masks for stonesThrow POND node.

NOTE: This version expects a 3.3V regulated voltage as power input. There is NO power regulation on this board.
I run a nominal 3.7V LiPo battery directly into the boards. Because xBee radios are 3.3V devices this is an electrically dangerous idea.
Future boards will have a solar charging circuit and 3.3V regulators. Use this version at own risk.

Circuit Mask -- iron onto copper



Placement Mask -- iron onto support side,
AFTER etching and drilling.

